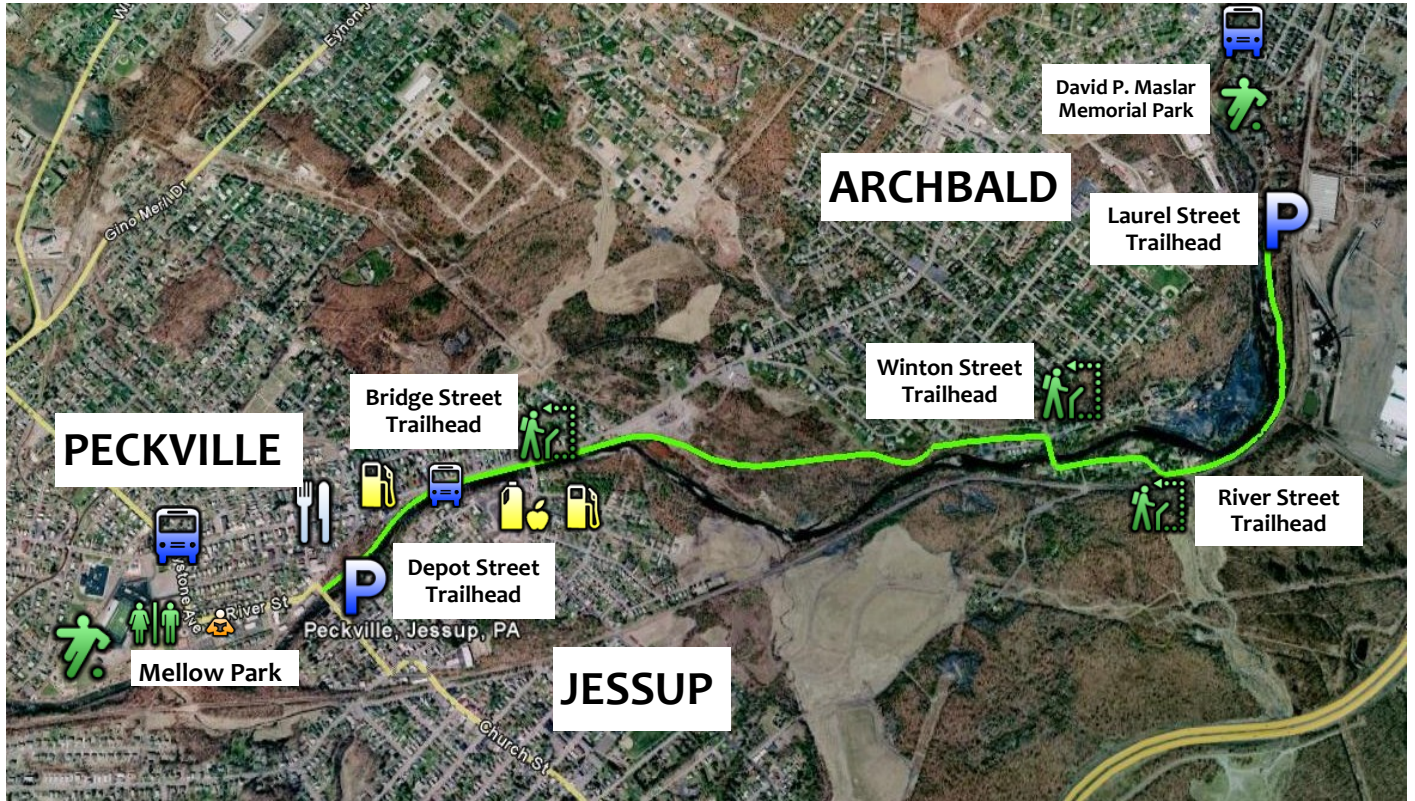


Mid Valley / Archbald to Peckville Trail Section



The Mid Valley trail section of the Lackawanna River Heritage Trail, otherwise known as the Ontario and Western (O&W) Railroad Trail, offers a spectacular experience of the Lackawanna River and wildlife. The Mid Valley Trail begins on Laurel Street in Archbald and travels south for two miles to Peckville.

The trail section is finished with crushed stone to allow a low impact surface for walking, running, or biking. It offers beautiful views of the Lackawanna River. Anglers fly fishing for trout are a common sight. The trail begins at David P. Maslar Memorial Park on Laurel Street in Archbald. Head south along the trail and stop to enjoy the new pond at the Laurel Street Trailhead. In Winton, stop for a moment at Sarah Bratty Park. You may catch a glimpse of a deer or two. Continue traveling along the scenic trail and look for a large pool of water next to the river. This is a naturally built beaver dam that is backing up the orange acid mine water into a pool, which allows the iron oxide and chemicals to settle and filter out before flowing into the Lackawanna River.

The Peckville Trailhead at Depot and Bridge Streets has free parking. Head straight on River Street, and within two blocks you will find the Valley Community Library and Robert Mellow Park.

Legend

Parking	Library
Park	Eatery
Gas Station	Bus stop
Convenient Market	Restrooms
Trail Access (no parking)	

TRAILHEADS / PARKING:

Laurel Street Trailhead: Located at the terminus of Laurel Street in Archbald. Free parking.

Depot Street Trailhead: Located at the intersections of Depot, Bridge, and River Streets in Peckville. Free parking.

PHOTOS

Visit LHVA's flickr photostream to view photos of the Mid Valley O&W Trail:

www.flickr.com/lackawannaheritage/



Lackawanna Heritage Valley National and State Heritage Area

Natalie Gelb, Executive Director
538 Spruce Street, Suite 516, Scranton, PA 18503
(570) 963-6730 ext. 8202 | ngelb@LHVA.org

www.LHVA.org